

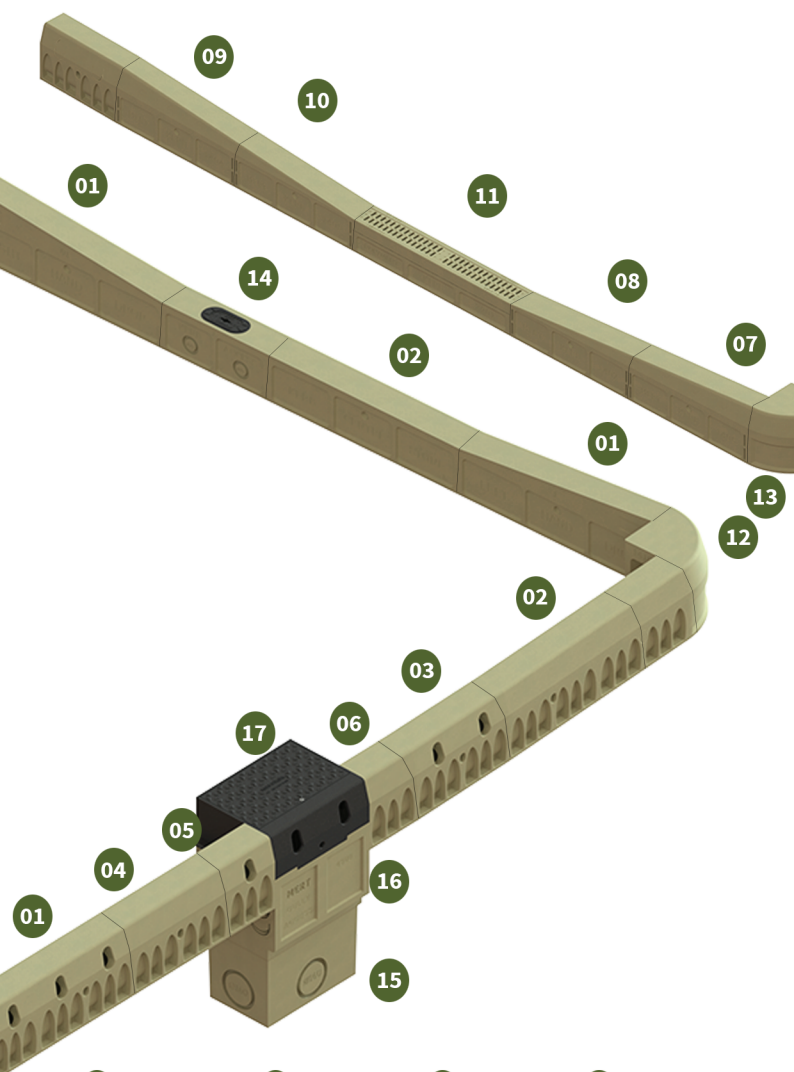


*KERB 305*  
***DRAINAGE SYSTEM***

**MERT DÖKÜM®**

**POLYMERT**

[www.mertdokum.com](http://www.mertdokum.com)



- |           |           |           |           |
|-----------|-----------|-----------|-----------|
| 01 - 1401 | 06 - 1414 | 11 - 3201 | 16 - 4300 |
| 02 - 1412 | 07 - 1404 | 12 - 1410 | 17 - 4400 |
| 03 - 1402 | 08 - 1405 | 13 - 1411 |           |
| 04 - 1413 | 09 - 1406 | 14 - 1415 |           |
| 05 - 1403 | 10 - 1407 | 15 - 4100 |           |

**The Kerb 305 Drainage System** represents an innovative integration of kerb and drainage elements, purposefully crafted to seamlessly integrate into contemporary, eco-friendly surface water management solutions. Kerb Drain family play a vital role in infrastructure by effectively managing surface water runoff and enhancing road safety. Their versatility and ease of installation make them valuable assets in the construction and maintenance of road networks.



A15



B125



C250



D400

MERT DÖKÜM®

POLYMERT

## 1401 KERB CHANNEL

**Material:** Polymer Concrete

**Type:** Perforated Kerb

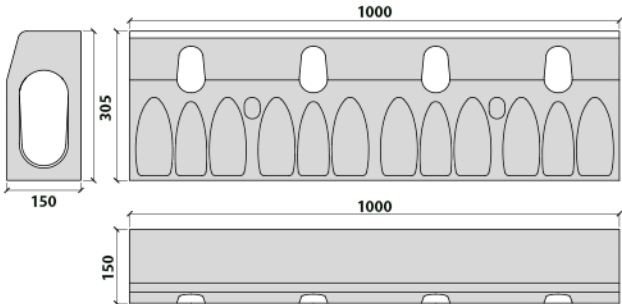
**Weight:** 51±2Kg

**Flow rate:** 7,15l/s



**1401 Perforated 100cm Length Kerb Drain:** This product is a 100cm long kerb with perforations, designed to efficiently collect surface water runoff from roadways and direct it towards drainage systems. It serves as both a kerb and a drainage channel, ensuring effective water management.

## 1401 KERB CHANNEL DIMENSIONS



[www.mertdokum.com](http://www.mertdokum.com)



A15



B125



C250



D400

MERT DÖKÜM®

POLYMERT

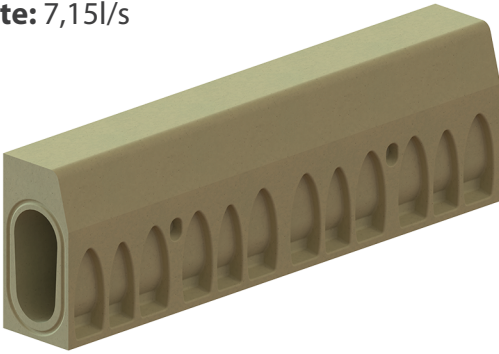
## 1412 KERB CHANNEL

**Material:** Polymer Concrete

**Type:** Non-perforated Kerb

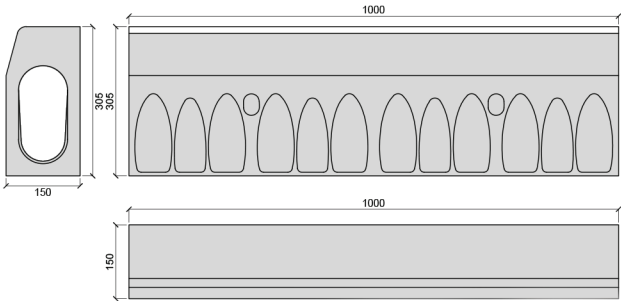
**Weight:** 53,5±2Kg

**Flow rate:** 7,15l/s



**1412 Solid 100cm Length Kerb:** The solid 100cm length kerb is a durable solution for road edges, providing both boundary definition and water runoff control. It effectively diverts surface water away from the road, enhancing safety and road longevity.

## 1412 KERB CHANNEL DIMENSIONS



[www.mertdokum.com](http://www.mertdokum.com)





A15



B125



C250



D400

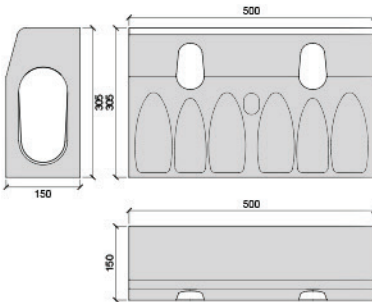
**MERT DÖKÜM®****POLYMERT**

## 1402 KERB CHANNEL

**Material:** Polymer Concrete**Type:** Perforated Kerb**Weight:** 26±2Kg**Flow rate:** 7,15l/s

**1402 Perforated 50 cm Length Kerb:** With a length of 50 cm and perforations for water drainage, this kerb is a versatile choice for managing water runoff along roadways. It efficiently collects and directs surface water, minimizing the risk of flooding and erosion.

## 1402 KERB CHANNEL DIMENSIONS

[www.mertdokum.com](http://www.mertdokum.com)



A15



B125



C250



D400

MERT DÖKÜM®

POLYMERT

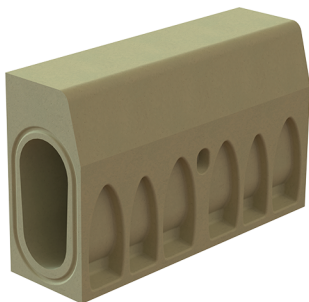
## 1413 KERB CHANNEL

**Material:** Polymer Concrete

**Type:** Non-perforated Kerb

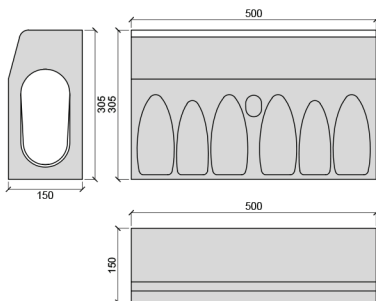
**Weight:** 27±2Kg

**Flow rate:** 7,15l/s



**1413 Solid 50 cm Length Kerb:** The solid 50 cm length kerb is a robust option for maintaining road edges. Its solid design ensures effective water control, preventing erosion and improving road safety.

## 1413 KERB CHANNEL DIMENSIONS





A15



B125



C250



D400

**MERT DÖKÜM®****POLYMERT**

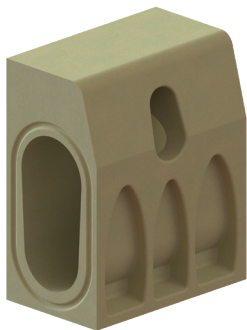
## 1403 KERB CHANNEL

**Material:** Polymer Concrete

**Type:** Perforated Kerb

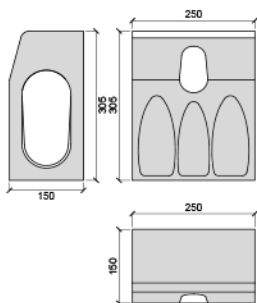
**Weight:** 13±2Kg

**Flow rate:** 7,15l/s



**1403 Perforated 25 cm Length Kerb:** Measuring 25 cm in length and featuring perforations, this kerb efficiently manages surface water run off. Its compact size makes it ideal for various road applications.

## 1403 KERB CHANNEL DIMENSIONS



[www.mertdokum.com](http://www.mertdokum.com)



A15



B125



C250



D400

MERT DÖKÜM®

POLYMERT

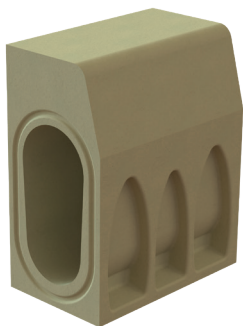
## 1414 KERB CHANNEL

**Material:** Polymer Concrete

**Type:** Non-perforated Kerb

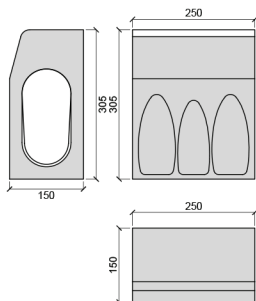
**Weight:** 13,5±2Kg

**Flow rate:** 7,15l/s



**1414 Solid 25 cm Length Kerb:** The solid 25 cm length kerb is a durable and space-efficient solution for controlling water runoff along road edges. It contributes to road safety and infrastructure longevity.

## 1414 KERB CHANNEL DIMENSIONS





A15



B125



C250



D400

MERT DÖKÜM®

POLYMERT

## 1404 KERB CHANNEL

**Material:** Polymer Concrete

**Type:** Non-perforated Drop

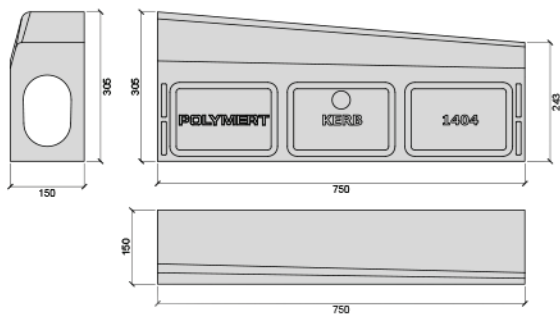
**Weight:** 39±2Kg

**Flow rate:** 7,15l/s



**1404 Solid Lowering Kerb:** This solid lowering kerb helps to manage elevation changes and water flow along roads, ensuring smooth transitions and efficient drainage.

## 1404 KERB CHANNEL DIMENSIONS







A15



B125



C250



D400

MERT DÖKÜM®

POLYMERT

## 1405 KERB CHANNEL

**Material:** Polymer Concrete

**Type:** Non-perforated Drop

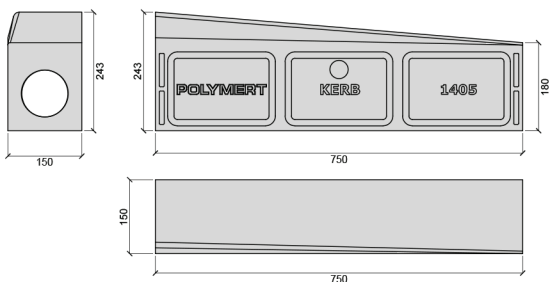
**Weight:** 33±2Kg

**Flow rate:** 7,15l/s



**1405 Solid Lowering Kerb:** This solid lowering kerb helps to manage elevation changes and water flow along roads, ensuring smooth transitions and efficient drainage.

## 1405 KERB CHANNEL DIMENSIONS





A15



B125



C250



D400

MERT DÖKÜM®

POLYMERT

## 1406 KERB CHANNEL

**Material:** Polymer Concrete

**Type:** Non-perforated Rise

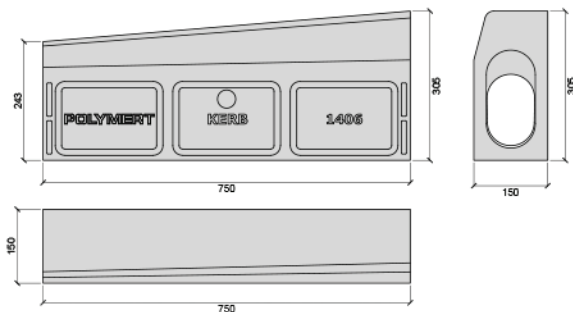
**Weight:** 39±2Kg

**Flow rate:** 7,15l/s



**1406 Solid Raised Kerb:** The solid raised kerb offers elevation control and edge definition for roadways, contributing to road safety and aesthetics.

## 1406 KERB CHANNEL DIMENSIONS



[www.mertdokum.com](http://www.mertdokum.com)



A15



B125



C250



D400

MERT DÖKÜM®

POLYMERT

## 1407 KERB CHANNEL

**Material:** Polymer Concrete

**Type:** Non-perforated Rise

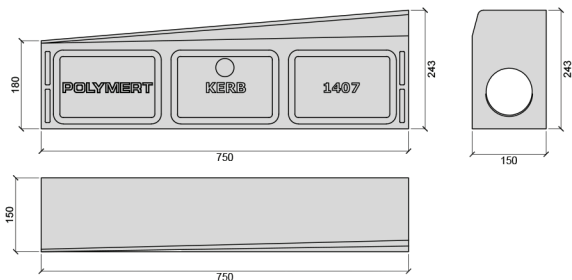
**Weight:** 33±2Kg

**Flow rate:** 7,15l/s



**1407 Solid Raised Kerb:** The solid raised kerb offers elevation control and edge definition for roadways, contributing to road safety and aesthetics.

## 1407 KERB CHANNEL DIMENSIONS



[www.mertdokum.com](http://www.mertdokum.com)



A15



B125



C250



D400

MERT DÖKÜM®

POLYMERT

## 3201 KERB CHANNEL

**Material:** Polymer Concrete

**Type:** Perforated Pedestrian Crossing Kerb

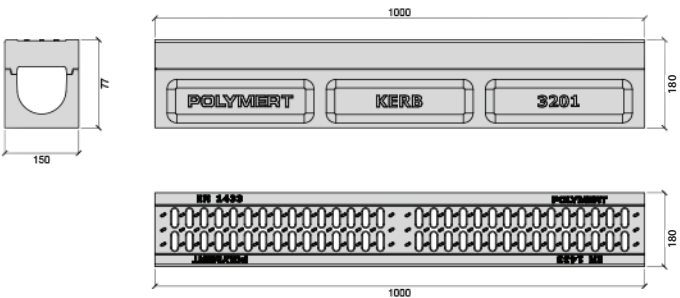
**Weight:** 34±2Kg

**Flow rate:** 7,15l/s



**3201 Perforated 100cm Length Pedestrian Crosswalk Kerb:** Specifically designed for pedestrian crosswalks, this 100cm length kerb with perforations helps in managing surface water runoff while ensuring safe pedestrian pathways.

## KERB 3201 CHANNEL DIMENSIONS





A15



B125



C250



D400

MERT DÖKÜM®

POLYMERT

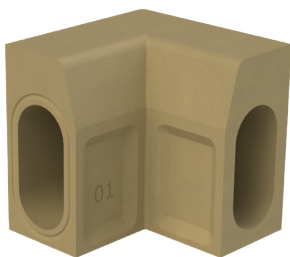
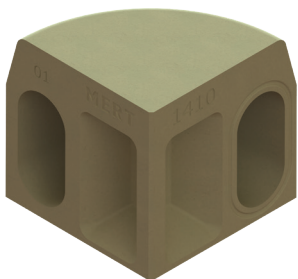
## 1410&1411 KERB CHANNEL

**Material:** Polymer Concrete

**Type:** Non-perforated Return Kerb

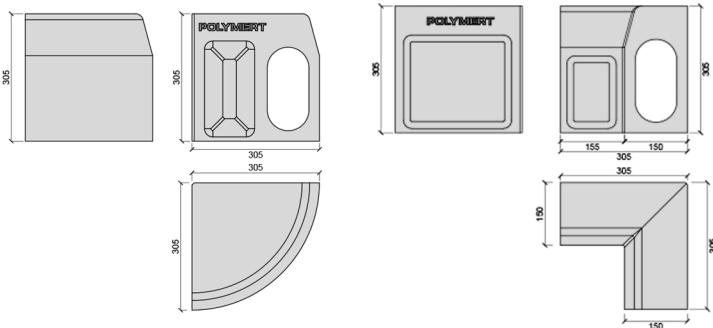
**Weight:** 28,5±2Kg and 23,5±2Kg

**Flow rate:** 7,15l/s



**1410 - 1411 Solid Turning Kerbs:** These solid turning kerbs are designed for smooth transitions on roadways. They provide structural support and enhance the aesthetics of road design.

## 1410&1411 KERB CHANNEL DIMENSIONS







A15



B125



C250



D400

MERT DÖKÜM®

POLYMERT

## 1415 KERB CHANNEL

**Material:** Polymer Concrete

**Type:** Non-perforated Intervention Kerb

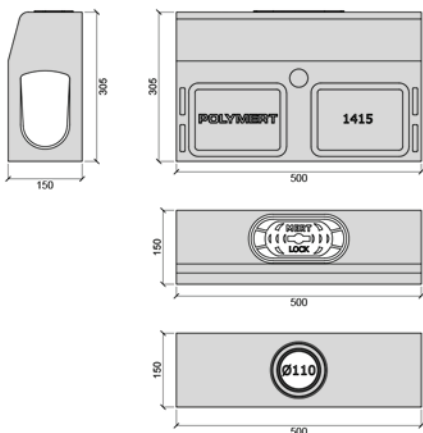
**Weight:** 31,5±2Kg

**Flow rate:** 7.15l/s



**1415 50cm Length Intermediate Kerb:** This 50cm length intermediate kerb serves as a transitional piece between kerbs and is a crucial component of the drainage system. It aids in redirecting water flow and maintaining road integrity.

## 1415 KERB CHANNEL DIMENSIONS



[www.mertdokum.com](http://www.mertdokum.com)



A15



B125



C250



D400

MERT DÖKÜM®

POLYMERT

## 4100 MANHOLE

**Material:** Polymer Concrete

**Type:** Manhole

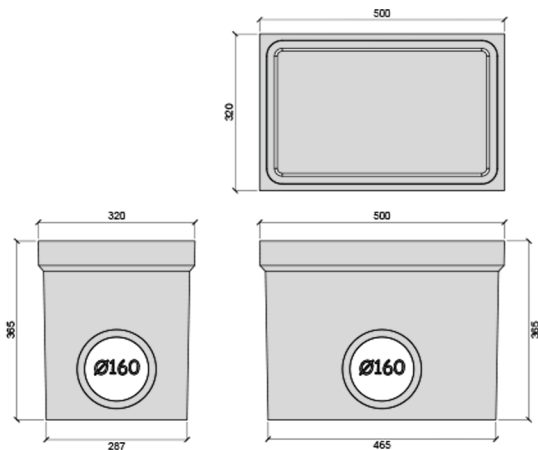
**Weight:** 28,4±2Kg

**Flow Rate:** 7,15l/s



**4100 Manhole:** The manhole is an essential component for accessing drainage systems. It provides secure access to maintenance and inspection points within the system.

## 4100 MANHOLE DIMENSIONS



[www.mertdokum.com](http://www.mertdokum.com)



A15



B125



C250



D400

MERT DÖKÜM®

POLYMERT

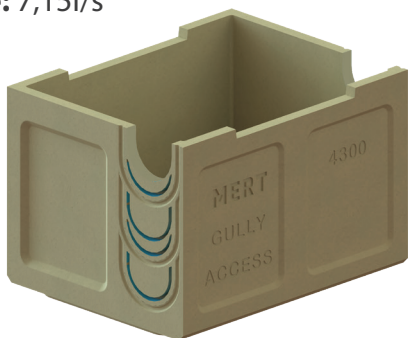
## 4300 MANHOLE

**Material:** Polymer Concrete

**Type:** Manhole

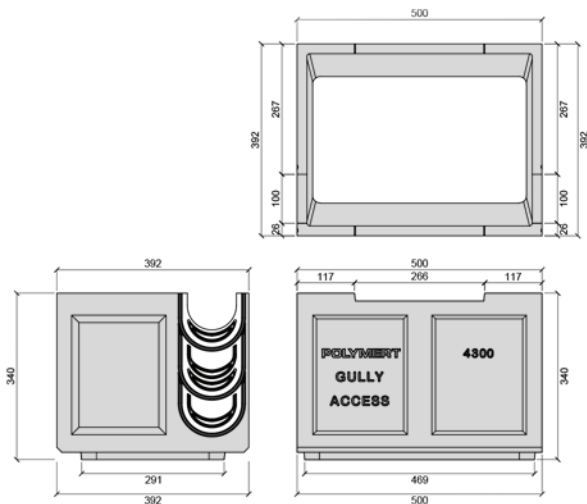
**Weight:** 23±2Kg

**Flow Rate:** 7,15l/s



**4300 Manhole:** The manhole is an essential component for accessing drainage systems. It provides secure access to maintenance and inspection points within the system.

## 4300 MANHOLE DIMENSIONS





A15



B125



C250



D400

MERT DÖKÜM®

POLYMERT

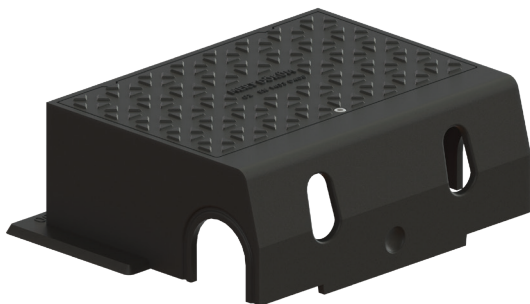
## 4400 ACCESS COVER

**Material:** Ductile Iron (GG50)

**Type:** Manhole Cover

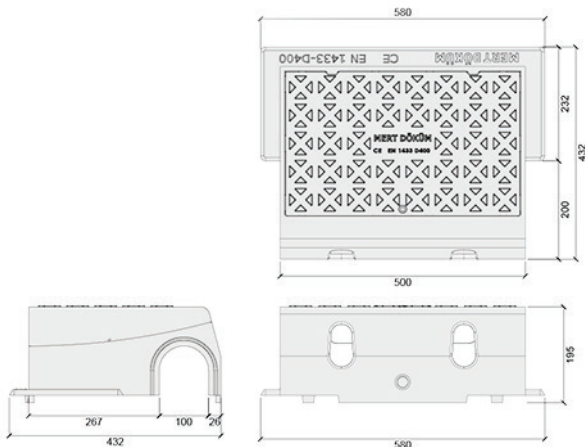
**Weight:** 47,3±1Kg

**Flow Rate:** 7,15 lt/sec



**4400 Manhole:** The manhole is an essential component for accessing drainage systems. It provides secure access to maintenance and inspection points within the system.

## 4400 ACCESS COVER DIMENSIONS



[www.mertdokum.com](http://www.mertdokum.com)



**MERT DÖKÜM®**

**POLYMERT**





**MERT DÖKÜM®**

**POLYMERT**

**HEAD OFFICE:**

İMES Sanayi, 203. Sk. No:13  
D:Sitesi,B Blok, 34776  
Ümraniye/İstanbul, Türkiye

**PHONE NUMBER :**

+(90) 216 313 4308

**EMAIL:**

export@mertdokum.com.tr

**[www.mertdokum.com](http://www.mertdokum.com)**