



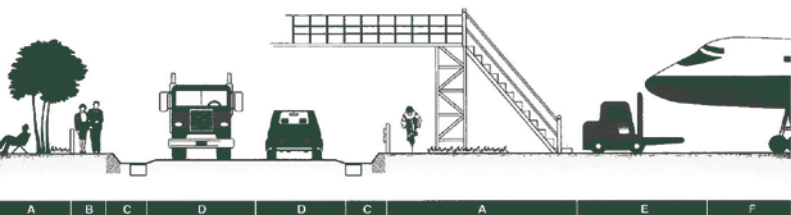
*POLYMER CONCRETE*  
***DRAINAGE SYSTEM***

**MERT DÖKÜM®**







**POLYMERT**

[www.mertdokum.com](http://www.mertdokum.com)

# TRAFFIC LOAD CLASSES



## POLYMERT

Load Type	En 124	Load	Description
	A15	15kN	Surfaces used by two-wheeled vehicles and pedestrians, areas or green areas
	B125	125kN	For parking floors or pavements, especially for vehicles
	C250	250kN	Surfaces, areas and kerbs used by two-wheeled vehicles and pedestrians
	D400	400kN	Parking areas for all vehicles, motorways and roadsides
	E600	600kN	Industrial plants and harbours closed to the public, especially those exposed to heavy loads
	F900	900kN	Surfaces exposed to high wheel loads, especially in airports and harbour areas



C250



D400



E600

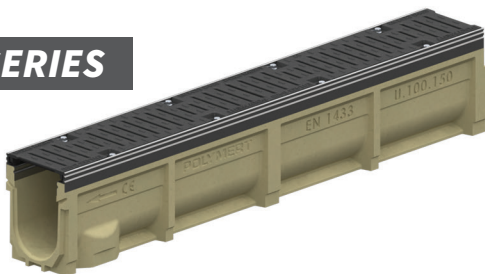


F900

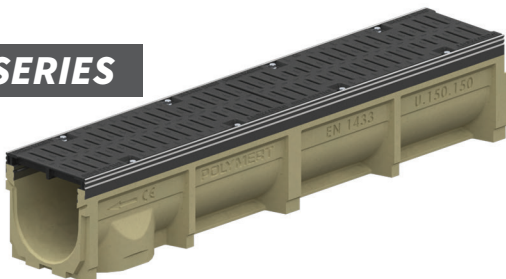
**MERT DÖKÜM®**

**POLYMERT**

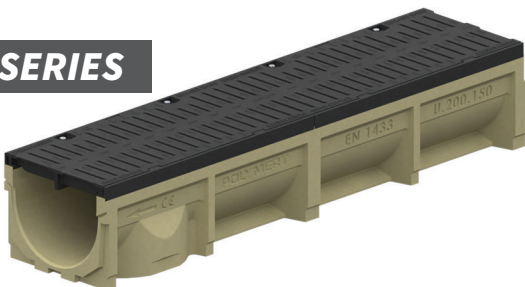
## **U100 SERIES**



## **U150 SERIES**



## **U200 SERIES**



## **U300 SERIES**



[www.mertdokum.com](http://www.mertdokum.com)



C250



D400



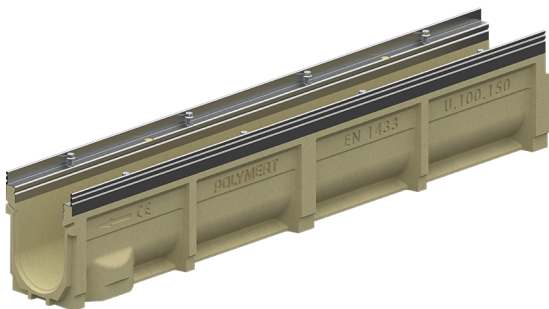
E600



F900

**MERT DÖKÜM®****POLYMERT**

## U 100 SERIES POLYMER DRAINAGE CHANNEL



## U 100 SERIES POLYMER CHANNEL DIMENSIONS



Product Name	A	B	C	D	E	Flow Rate(l/s)	Weight (Kg)
U100/40	100	140	40	80	1000	0,50	10,0±1
U100/60			60	100		1,00	11,0±1
U100/80			80	120		1,50	12,0±1
U100/100			100	140		3,43	12,5±1
U100/125			125	165		5,00	13,5±1
U100/150			150	190		6,77	14,5±1
U100/175			175	215		8,68	15,5±1
U100/200			200	240		10,76	16,5±1
U100/225			225	265		12,90	17,6±1
U100/250			250	290		15,34	18,7±1
U100/300			300	340		20,50	21,5±1



C250



D400



E600



F900

**MERT DÖKÜM®****POLYMERT**

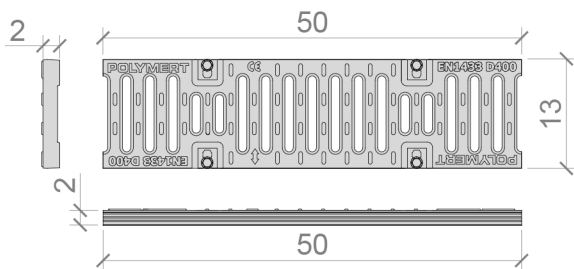
## U 100 SERIES DUCTILE IRON GRILL



Conform to  
Ductile Iron Edge

Conform to  
Galvanised Edge

## U 100 SERIES DUCTILE IRON GRILL DIMENSIONS



Product Name	Code	Slot Size	Weight (Kg)	Material
C250 Mesh Grating (Galvanized Angle )	153021.U100.0000	6mm	3,60±0,5	GGG50
C250 Mesh Grating (Galvanized Angle )	153021.U100.0001	10mm	3,35±0,5	GGG50
D400 Mesh Grating (Galvanized Angle )	153021.U100.0002	6mm	4,00±0,5	GGG50
D400 Mesh Grating (Galvanized Angle )	153021.U100.0003	10mm	3,70±0,5	GGG50
D400 Mesh Grating (Casting Angle )	153021.U100.0004	6mm	3,90±0,5	GGG50
D400 Mesh Grating (Casting Angle )	153021.U100.0005	10mm	3,65±0,5	GGG50
E600 Mesh Grating (Casting Angle )	153021.U100.0006	6mm	4,35±0,5	GGG50
E600 Mesh Grating (Casting Angle )	153021.U100.0007	10mm	4,10±0,5	GGG50
F900 Mesh Grating (Casting Angle )	153021.U100.0008	6mm	5,50±0,5	GGG50
F900 Mesh Grating (Casting Angle )	153021.U100.0009	10mm	5,25±0,5	GGG50



C250



D400



E600



F900

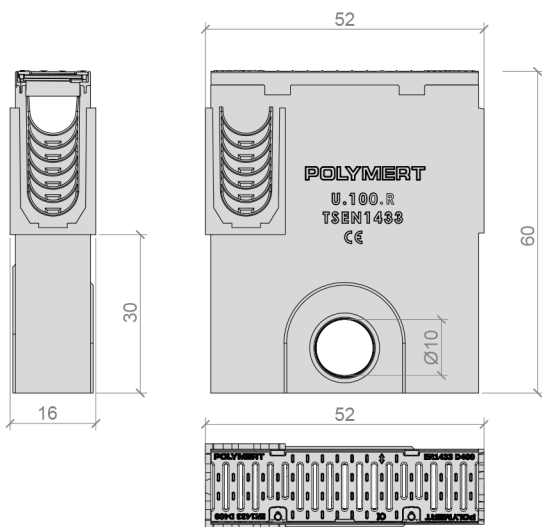
MERT DÖKÜM®

POLYMERT

## U 100 SERIES POLYMER SUMP



## U 100 SERIES POLYMER SUMP DIMENSIONS



[www.mertdokum.com](http://www.mertdokum.com)



C250



D400



E600



F900

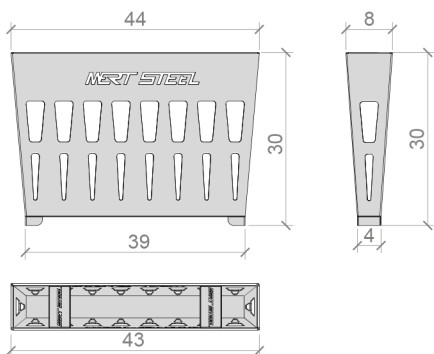
**MERT DÖKÜM®**

**POLYMERT**

## U 100 SERIES MUD BUCKET



## U 100 SERIES GALVANISED MUD BUCKET DIMENSIONS



## U 100 SERIES POLYMER END CAPS

U-100-01



FEMALE END CAP

U-100-02



MALE END CAP

U-100-03



MALE  
CONNECTOR

U-100-04



FEMALE  
CONNECTOR

[www.mertdokum.com](http://www.mertdokum.com)



C250



D400



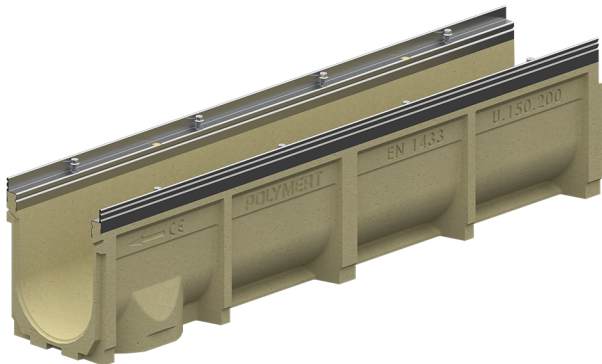
E600



F900

**MERT DÖKÜM®****POLYMERT**

## U 150 SERIES POLYMER DRAINAGE CHANNEL



## U 150 SERIES POLYMER CHANNEL DIMENSIONS



Product Name	A	B	C	D	E	Flow Rate(l/s)	Weight (Kg)
U150/100	150	190	100	140	1000	3,87	15,8±1
U150/125			125	165		6,57	17,0±1
U150/150			150	190		9,87	18,2±1
U150/175			175	215		12,60	19,0±1
U150/200			200	240		15,90	20,1±1
U150/225			225	265		19,24	21,1±1
U150/250			250	290		22,80	22,2±1
U150/275			275	315		26,50	23,1±1
U150/300			300	340		30,50	24,3±1





C250



D400



E600



F900

**MERT DÖKÜM®****POLYMERT**

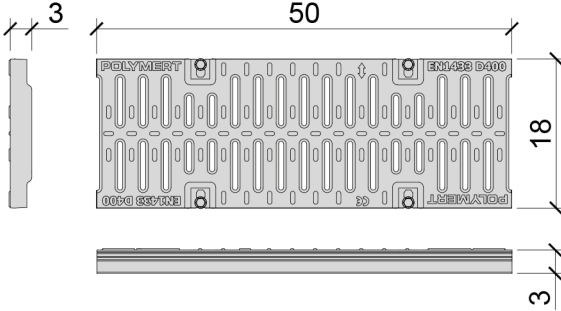
## U 150 SERIES DUCTILE IRON GRILL



Conform to  
Ductile Iron Edge

Conform to  
Galvanised Edge

## U 150 SERIES DUCTILE IRON GRILL DIMENSIONS



Product Name	Code	Slot Size	Weight (Kg)	Material
C250 Mesh Grating (Galvanized Angle )	153021.U150.0000	6mm	6,35±0,5	GGG50
C250 Mesh Grating (Galvanized Angle )	153021.U150.0001	10mm	6,00±0,5	GGG50
D400 Mesh Grating (Galvanized Angle )	153021.U150.0002	6mm	6,90±1	GGG50
D400 Mesh Grating (Galvanized Angle )	153021.U150.0003	10mm	6,55±1	GGG50
D400 Mesh Grating (Casting Angle )	153021.U150.0004	6mm	6,65±1	GGG50
D400 Mesh Grating (Casting Angle )	153021.U150.0005	10mm	6,50±1	GGG50
E600 Mesh Grating (Casting Angle )	153021.U150.0006	6mm	8,60±1	GGG50
E600 Mesh Grating (Casting Angle )	153021.U150.0007	10mm	8,20±1	GGG50
F900 Mesh Grating (Casting Angle )	153021.U150.0008	6mm	9,40±1	GGG50
F900 Mesh Grating (Casting Angle )	153021.U150.0009	10mm	9,05±1	GGG50



C250



D400



E600

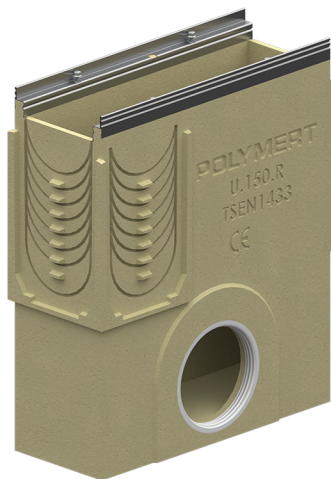


F900

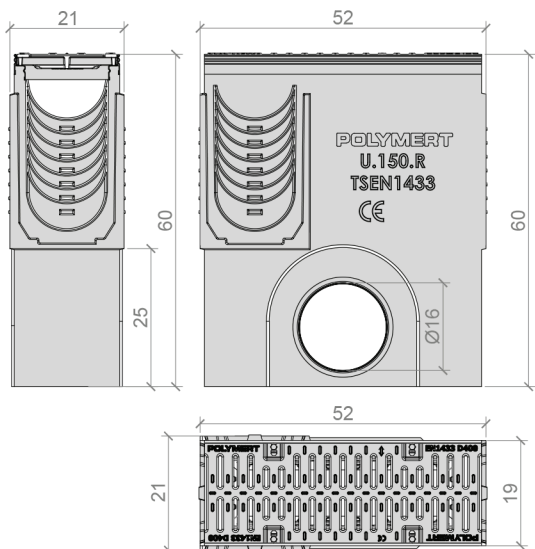
MERT DÖKÜM®

POLYMERT

## U 150 SERIES POLYMER SUMP



## U 150 SERIES POLYMER SUMP DIMENSIONS



[www.mertdokum.com](http://www.mertdokum.com)



C250



D400



E600



F900

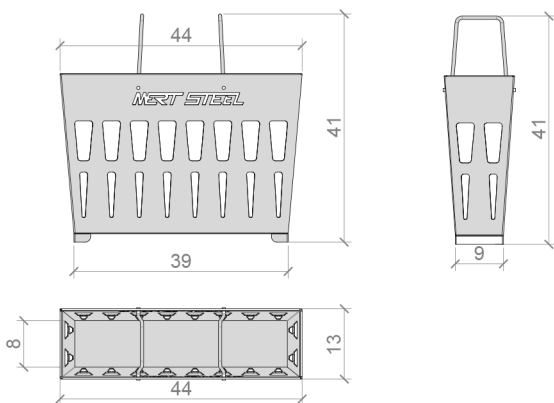
**MERT DÖKÜM®**

**POLYMERT**

## U 150 SERIES MUD BUCKET



## U 150 SERIES GALVANISED MUD BUCKET DIMENSIONS



## U 150 SERIES POLYMER END CAPS

U-150-01



FEMALE END CAP

U-150-02



MALE END CAP

U-150-03



MALE  
CONNECTOR

U-150-04



FEMALE  
CONNECTOR

[www.mertdokum.com](http://www.mertdokum.com)



C250



D400



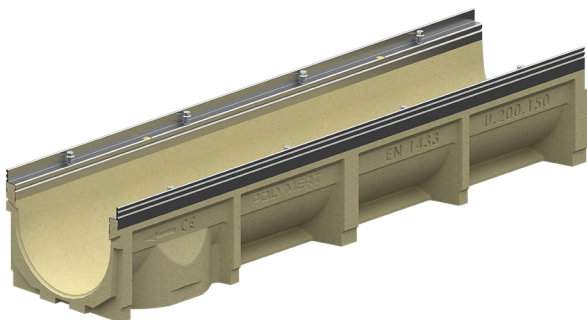
E600



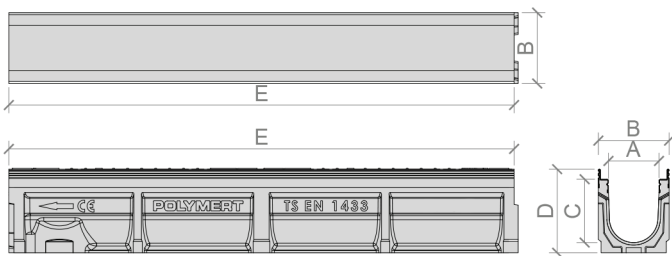
F900

**MERT DÖKÜM®****POLYMERT**

## U 200 SERIES POLYMER DRAINAGE CHANNEL



## U 200 SERIES POLYMER CHANNEL DIMENSIONS



Product Name	A	B	C	D	E	Flow Rate(l/s)	Weight (Kg)
U200/150	200	240	150	190	1000	12,44	21,3±1
U200/175			175	215		16,25	22,1±1
U200/200			200	240		20,38	23,1±1
U200/225			225	265		24,82	24,1±1
U200/250			250	290		29,53	25,1±1
U200/275			275	315		34,52	26,1±1
U200/300			300	340		39,74	27,2±1

[www.mertdokum.com](http://www.mertdokum.com)



C250



D400



E600



F900

**MERT DÖKÜM®****POLYMERT**

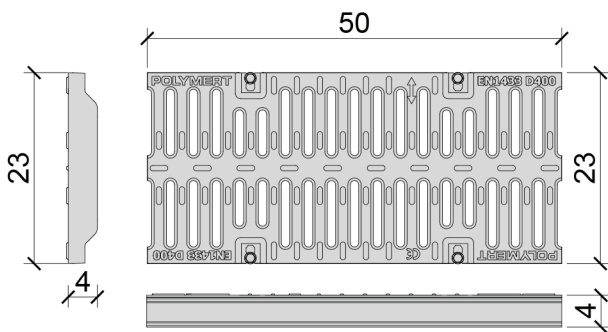
## U 200 SERIES DUCTILE IRON GRILL



Conform to  
Ductile Iron Edge

Conform to  
Galvanised Edge

## U 200 SERIES DUCTILE IRON GRILL DIMENSIONS



Product Name	Code	Slot Size	Weight (Kg)	Material
C250 Mesh Grating (Galvanized Angle )	153021.U200.0000	6mm	8,70±0,5	GGG50
C250 Mesh Grating (Galvanized Angle )	153021.U200.0001	10mm	8,50±0,5	GGG50
D400 Mesh Grating (Galvanized Angle )	153021.U200.0002	6mm	10,55±1	GGG50
D400 Mesh Grating (Galvanized Angle )	153021.U200.0003	10mm	10,35±1	GGG50
D400 Mesh Grating (Casting Angle )	153021.U200.0004	6mm	10,75±1	GGG50
D400 Mesh Grating (Casting Angle )	153021.U200.0005	10mm	10,30±1	GGG50
E600 Mesh Grating (Casting Angle )	153021.U200.0006	6mm	12,15±1	GGG50
E600 Mesh Grating (Casting Angle )	153021.U200.0007	10mm	11,65±1	GGG50
F900 Mesh Grating (Casting Angle )	153021.U200.0008	6mm	15,44±1	GGG50
F900 Mesh Grating (Casting Angle )	153021.U200.0009	10mm	14,55±1	GGG50



C250



D400



E600

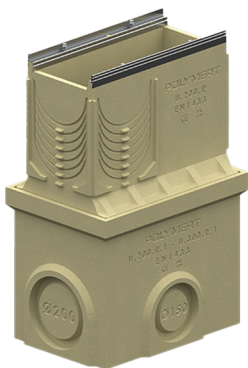


F900

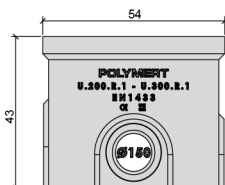
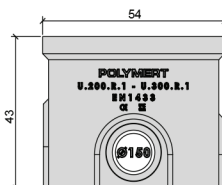
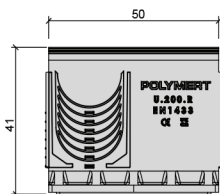
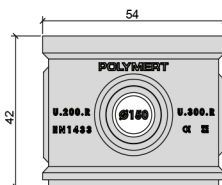
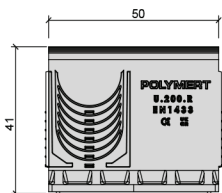
MERT DÖKÜM®

POLYMERT

## U 200 SERIES POLYMER SUMP



## U 200 SERIES POLYMER SUMP DIMENSIONS



[www.mertdokum.com](http://www.mertdokum.com)



C250



D400



E600

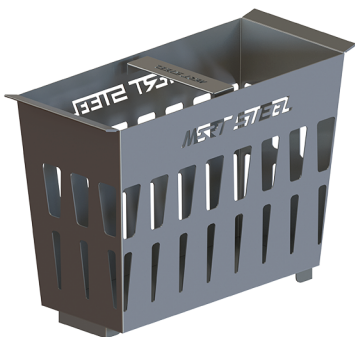


F900

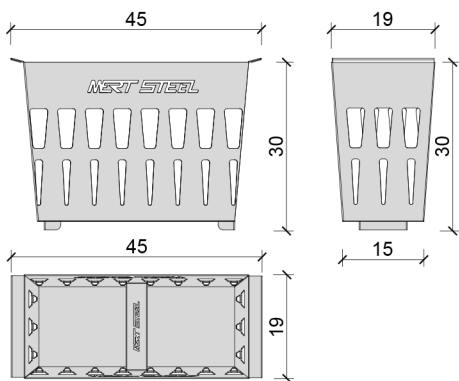
**MERT DÖKÜM®**

**POLYMERT**

## U 200 SERIES MUD BUCKET



## U 200 SERIES GALVANISED MUD BUCKET DIMENSIONS



## U 200 SERIES POLYMER END CAPS

U-200-01



FEMALE END CAP

U-200-02



MALE END CAP

U-200-03



MALE  
CONNECTOR

U-200-04



FEMALE  
CONNECTOR

[www.mertdokum.com](http://www.mertdokum.com)



C250



D400



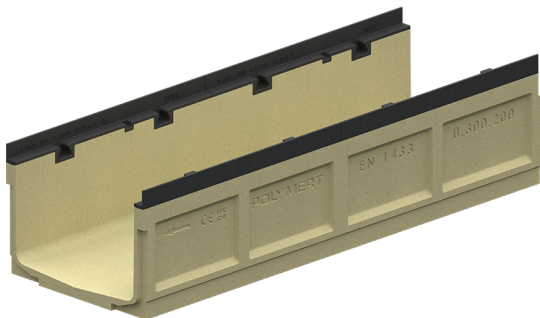
E600



F900

**MERT DÖKÜM®****POLYMERT**

## U 300 SERIES POLYMER DRAINAGE CHANNEL



## U 300 SERIES POLYMER CHANNEL DIMENSIONS



Product Name	A	B	C	D	E	Flow Rate(l/s)	Weight (Kg)
U300/200	300	348	200	250	1000	35,17	39,5±2
U300/250			250	300		49,38	43,5±2
U300/300			300	350		65,00	46,5±2
U300/350			350	400		82,38	50,5±2
U300/400			400	450		100,73	54,5±2

[www.mertdokum.com](http://www.mertdokum.com)





C250



D400



E600



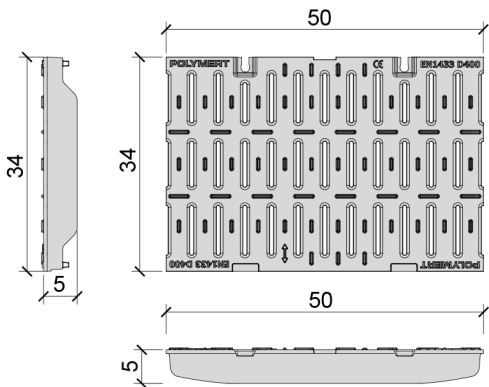
F900

**MERT DÖKÜM®****POLYMERT**

## U 300 SERIES DUCTILE IRON GRILL



## U 300 SERIES DUCTILE IRON GRILL DIMENSIONS



Product Name	Code	Slot Size	Weight (Kg)	Material
C250 Mesh Grating (Casting Angle )	153021.U300.0000	6mm	19,70±1	GGG50
C250 Mesh Grating (Casting Angle )	153021.U300.0001	10mm	19,20±1	GGG50
D400 Mesh Grating (Casting Angle )	153021.U300.0002	6mm	22,40±1	GGG50
D400 Mesh Grating (Casting Angle )	153021.U300.0003	10mm	22,20±1	GGG50
E600 Mesh Grating (Casting Angle )	153021.U300.0004	6mm	25,90±1	GGG50
E600 Mesh Grating (Casting Angle )	153021.U300.0005	10mm	25,10±1	GGG50
F900 Mesh Grating (Casting Angle )	153021.U300.0006	6mm	30,50±1	GGG50
F900 Mesh Grating (Casting Angle )	153021.U300.0007	10mm	30,00±1	GGG50



C250



D400



E600



F900

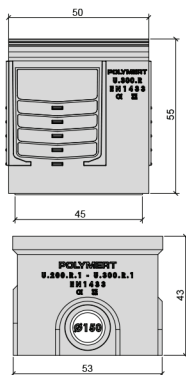
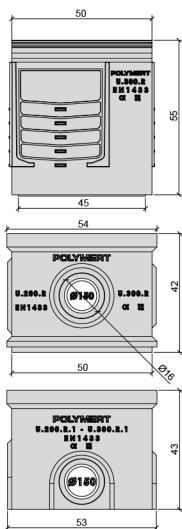
MERT DÖKÜM®

POLYMER

## U 300 SERIES POLYMER SUMP



## U 300 SERIES POLYMER SUMP DIMENSIONS



[www.mertdokum.com](http://www.mertdokum.com)



C250



D400



E600

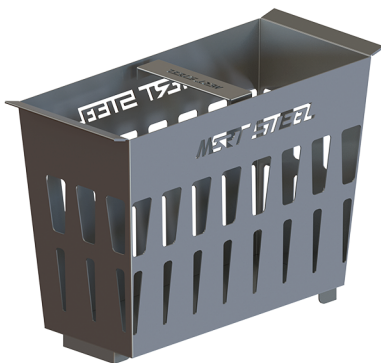


F900

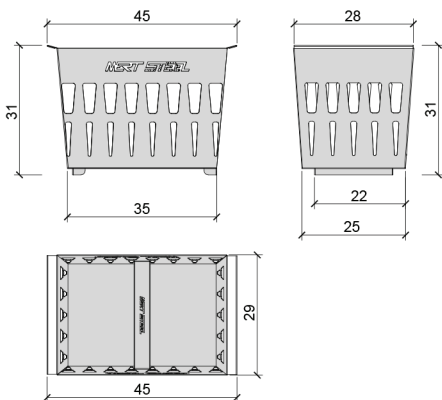
MERT DÖKÜM®

POLYMERT

## U 300 SERIES MUD BUCKET



## U 300 SERIES GALVANISED MUD BUCKET DIMENSIONS



## U 300 SERIES POLYMER END CAPS

U-300-01



FEMALE END CAP

U-300-02



MALE END CAP

U-300-03



MALE  
CONNECTOR

U-300-04



FEMALE  
CONNECTOR

[www.mertdokum.com](http://www.mertdokum.com)



C250



D400



E600



F900

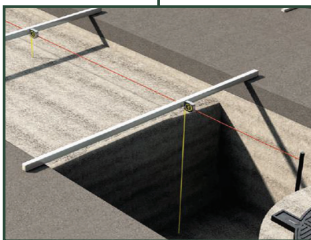
**MERT DÖKÜM®****POLYMERT**

## APPLICATION STAGES

### 1- Preparation

**1**

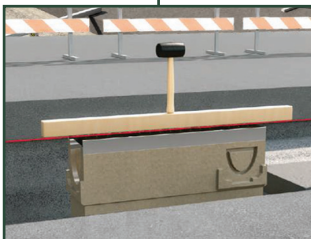
Apply according to the flow direction by checking the direction signs during the installation of the channels. Check the conformity of the trench to the channel height by pulling the guide rope. If there is a problem with the height, make level/grade adjustment by reinforcing the trench floor with concrete suitable for your product.



### 2- Solution

**2**

Place a wooden wedge on the channel for shock absorption and a water gage for slope control. Consider the water gage and with the help of a hammer, strike the wooden wedge to bring the slope of the channel to the desired level. Start to install the duct system from the manhole. Do not forget to place manholes at 25 meter intervals.

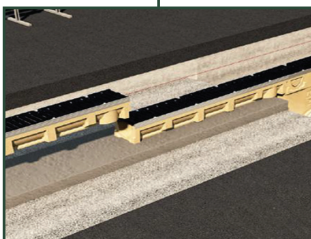


### 3- Installation

**3**

Continue the installation of the Channel System, which you started with manhole installation, with Polymer Concrete Drainage Channels.

Make the slope and elevation adjustments of the channels with the help of the wooden wedge, waer gage and hammer during the installation.



Support the edges of the channels with concrete suitable for your product class



C250



D400



E600



F900

**MERT DÖKÜM®****POLYMERT**

## APPLICATION STAGES

### 4- Level Adjustment

**4**

While the installation process completed and the Channel System will not be connected to a sump, close the starting point of the system using an end cap.

Cover the inner and upper parts of the channels with protective material to prevent contamination and damage.



### 5- Stabilisation

**5**

As specified in the installation Instructions, prepare concrete moulds with suitable concrete thickness in the channel side gaps specially determined for your product.

Start filling the channel side gaps with suitable concrete. At this stage, it is important that the concrete reaches up to the top level of the Channel.



### 6- Surface Correction

**6**

Fill the cavity outside the protective formwork concrete of the side walls with suitable concrete.

At this stage, if the surface to be filled with concrete is wide, leave a joint gap in a line against the floor movements.

Level and grade the concrete by vibration.





C250



D400



E600



F900

**MERT DÖKÜM®**

**POLYMERT**

## APPLICATION STAGES

### 7- Asphaltting

Once the concreting process of the channel bottom and side walls is completed, fill with asphalt up to the Drainage Side Wall Protective Concrete.

7

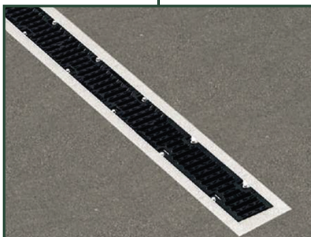


### 8- Closing Process

Cut the asphalt poured on the concrete according to the concrete joint underneath.

Seal the gap with silicone sealant or other suitable joint treatment.

8





**MERT DÖKÜM®**

**POLYMERT**





**MERT DÖKÜM®**

**POLYMERT**

**HEAD OFFICE:**

İMES Sanayi, 203. Sk. No:13  
D:Sitesi,B Blok, 34776  
Ümraniye/İstanbul, Türkiye

**PHONE NUMBER :**

+(90) 216 313 4308

**EMAIL:**

export@mertdokum.com.tr

**[www.mertdokum.com](http://www.mertdokum.com)**