



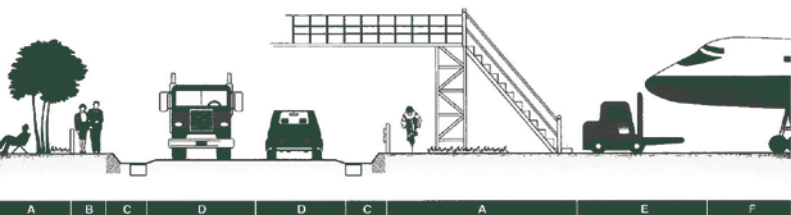
## ACCESS **COVERS**

**MERT DÖKÜM®**







**MERT STEEL®**

[www.mertdokum.com](http://www.mertdokum.com)

# TRAFFIC LOAD CLASSES



## MERT STEEL®

Load Type	En 124	Load	Description
	A15	15kN	Surfaces used by two-wheeled vehicles and pedestrians, areas or green areas
	B125	125kN	For parking floors or pavements, especially for vehicles
	C250	250kN	Surfaces, areas and kerbs used by two-wheeled vehicles and pedestrians
	D400	400kN	Parking areas for all vehicles, motorways and roadsides
	E600	600kN	Industrial plants and harbours closed to the public, especially those exposed to heavy loads
	F900	900kN	Surfaces exposed to high wheel loads, especially in airports and harbour areas



A15



B125



C250

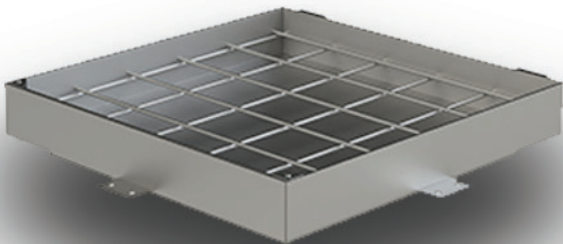


D400

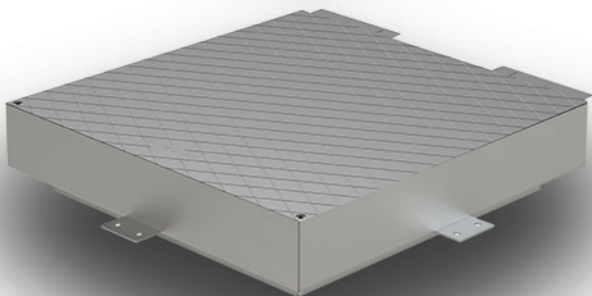
**MERT DÖKÜM®**

**MERT STEEL®**

## ***U SERIES***



## ***N SERIES***



## ***M SERIES***



[www.mertdokum.com](http://www.mertdokum.com)



A15



B125



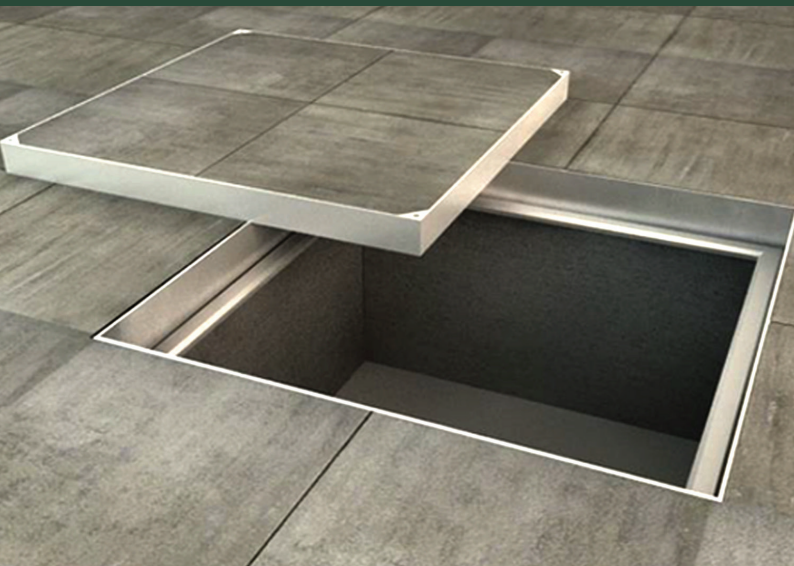
C250



D400

MERT DÖKÜM®

MERT STEEL®



**Mert Steel** U Series Access covers offer high quality built-in covers especially for use in landscaping areas. The covers are designed to leave a minimum of metal exposed, so that the presence of access covers is concealed, and have a chamber to allow the coating material around the cover to continue.

All **Mert Steel** U Series access covers are suitable for internal and external use and can be manufactured in non-standard sizes and depths to accommodate any coating thickness.

Our covers can respond to load classes between A15 and D400.



A15



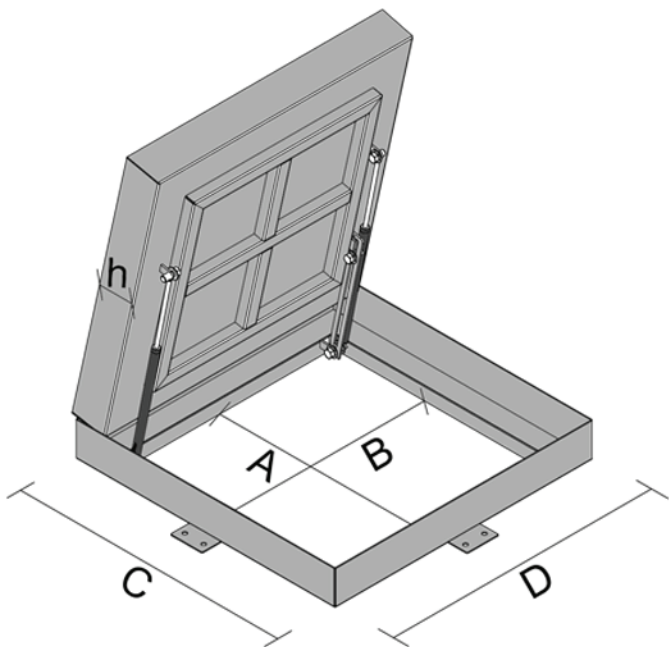
B125



C250



D400

**MERT DÖKÜM®****MERT STEEL®**

MK - U	A(mm)	B(mm)	C(mm)	D(mm)	h(mm)
U500	500	500	620	620	50 - 120
U600	600	600	720	720	
U700	700	700	820	820	
U800	800	800	920	920	
U900	900	900	1020	1020	
U1000	1000	1000	1120	1120	

**\* We are capable to produce "project based designs" with various options & accessories to match the customer requirements and quality expectations.**

[www.mertdokum.com](http://www.mertdokum.com)



A15



B125



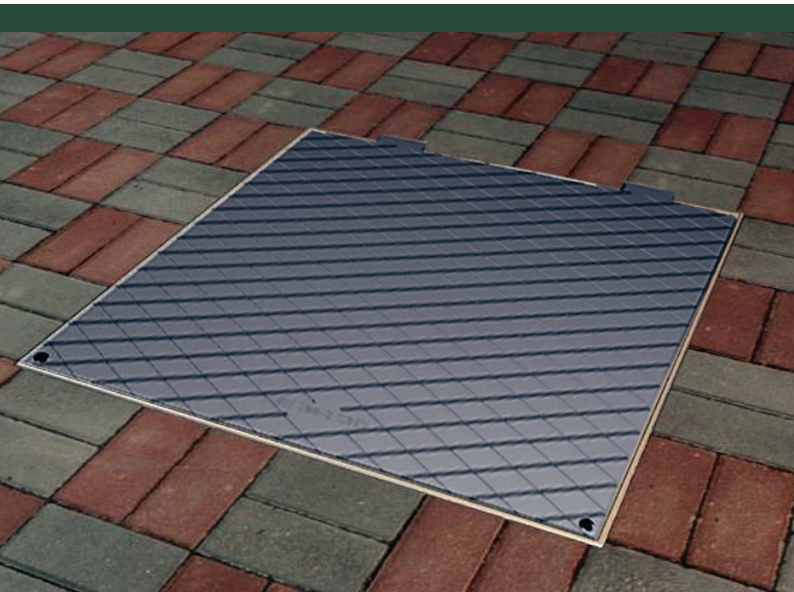
C250



D400

**MERT DÖKÜM®**

**MERT STEEL®**



**Mert Steel** N Series access covers can be applied especially in landscaping areas, pavements and car park areas and areas with light vehicle traffic. The covers are designed in such a way that the maximum level of metal is exposed, decorative patterned sheet metal material is used at the top of the access covers.

All **Mert Steel** N Series access covers are suitable for internal and external use and can be manufactured in AISI304 - **AISI316 Galvanised Steel** material, non-standard sizes, which can adapt to any coating thickness.

Our covers can respond to load classes between A15 and D400.



A15



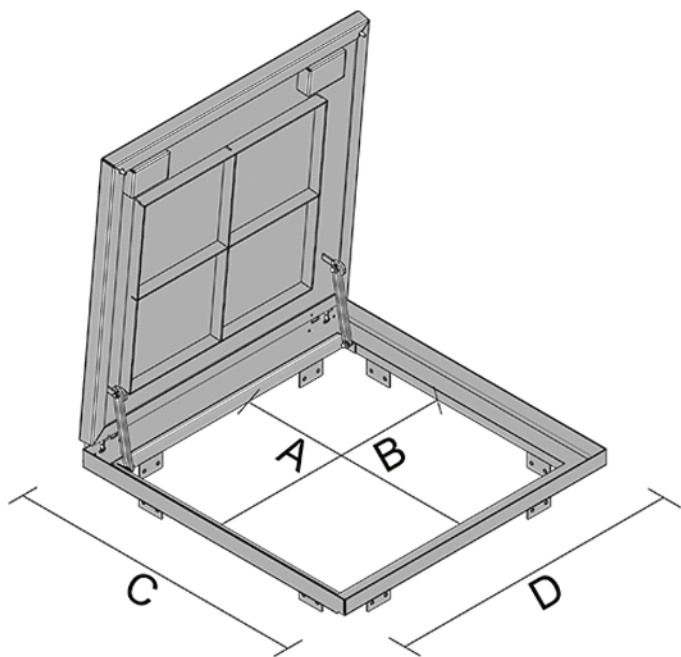
B125



C250



D400

**MERT DÖKÜM®****MERT STEEL®**

MK - N	A(mm)	B(mm)	C(mm)	D(mm)
N500	500	500	600	600
N600	600	600	700	700
N700	700	700	800	800
N800	800	800	900	900
N900	900	900	1000	1000
N1000	1000	1000	1100	1100

**\* We are capable to produce "project based designs" with various options & accessories to match the customer requirements and quality expectations.**

[www.mertdokum.com](http://www.mertdokum.com)



MERT DÖKÜM®

MERT STEEL®



**Mert Steel** M Series access covers are especially suitable for use on roofs and landscaping areas.

The covers are designed to ensure tightness, **Mert Steel** M Series access covers are manufactured with panic bars so that they can be used as escape covers on roofs and manholes.

All **Mert Steel** M Series access covers are suitable for internal and external use and can be manufactured in non-standard sizes and depths to accommodate any coating thickness.

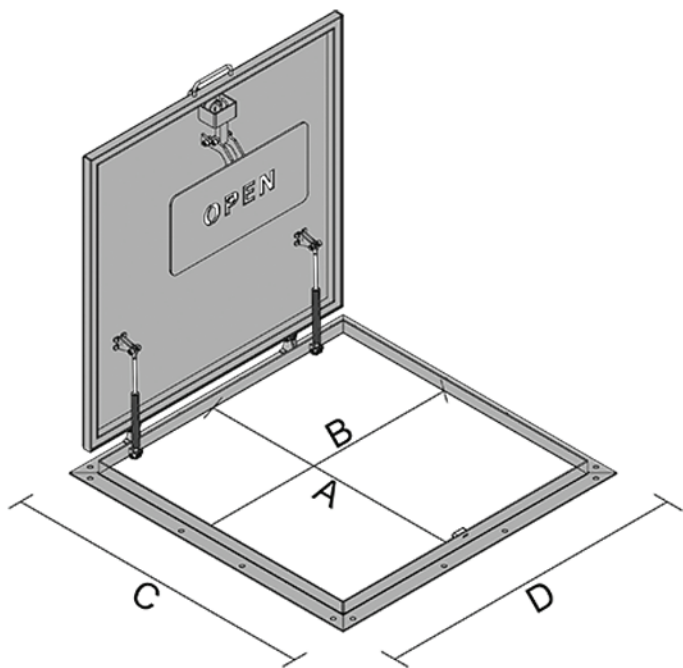
Our covers can respond to A15 load classes.





**MERT DÖKÜM®**

**MERT STEEL®**



MK - M	A(mm)	B(mm)	C(mm)	D(mm)
M500	500	500	600	600
M600	600	600	700	700
M700	700	700	800	800
M800	800	800	900	900
M900	900	900	1000	1000
M1000	1000	1000	1100	1100

**\* We are capable to produce "project based designs" with various options & accessories to match the customer requirements and quality expectations.**

[www.mertdokum.com](http://www.mertdokum.com)



A15



B125



C250



D400

MERT DÖKÜM®

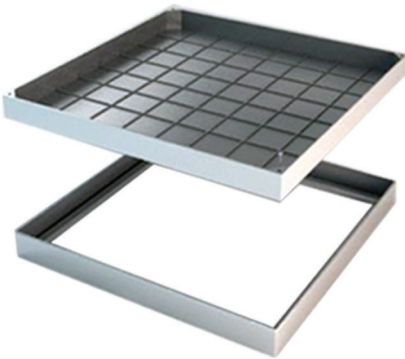
MERT STEEL®

## AUXILIARY EQUIPMENT

### 1- Mesh Reinforcement

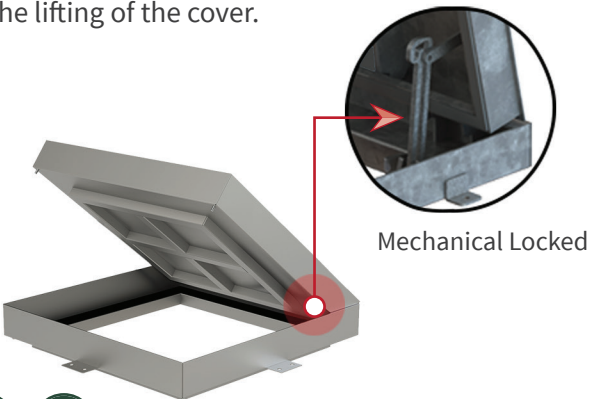
Mesh reinforcements used in MK-U series covers are used to increase the adhesion of the coating material to be placed in the chamber.

U



### 2- Hinges

It is used to ensure that the frame and the cover are opened without separating from each other and to facilitate the lifting of the cover.



U

M

N

[www.mertdokum.com](http://www.mertdokum.com)



A15



B125



C250



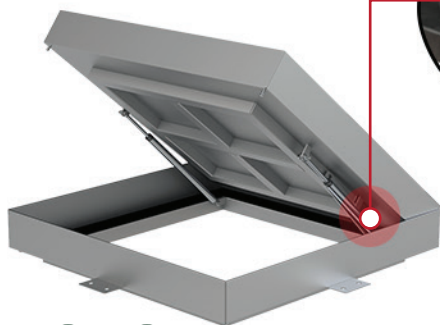
D400

MERT DÖKÜM®

MERT STEEL®

## AUXILIARY EQUIPMENT

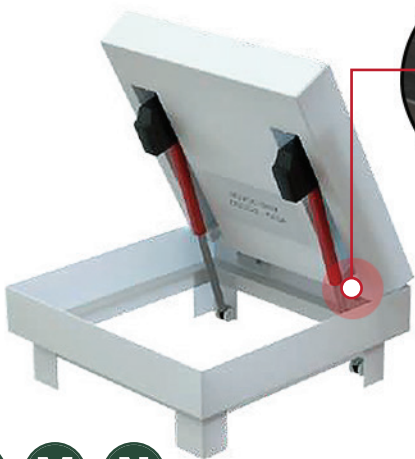
### 3- Gas Piston



Mechanical Locked

U M N

### 4- Electric Motor Piston



Mechanical Locked

U M N

[www.mertdokum.com](http://www.mertdokum.com)



A15



B125



C250



D400

**MERT DÖKÜM®****MERT STEEL®**

## APPLICATION STAGES

### 1- Preparation

If there are any loose particles or dirt (oil, grease, etc.) in the cavity where the frame will be installed, remove them with a brush and check the condition of the intervention cover opening.

-Make sure that the support section where the frame will be placed is sufficiently rough. This ensures better adhesion to the mortar.

**1**

### 2- Solution

-Check the diameter of the opening or groove of the interference cover to which the frame is to be fitted.

-Clean Access cover opening must be at least 5cm more than the frame diameter.

**2**

### 3- Installation

- Place a layer of sealant (or fresh concrete) on the top of the frame of the intervention hatch.  
Minimum recommended thickness of concrete to be used under the frame;

-In case high strength ready-mixed concretes with impermeability feature are used, minimum 4cm.

-If ready-mixed concrete is used, 7 cm high concrete with a minimum

C35 concrete class is recommended.

**3**



A15



B125



C250



D400

MERT DÖKÜM®

MERT STEEL®

## APPLICATION STAGES

### 4- Level Adjustment

4

-Press lightly on the frame and place it with the help of a wooden-plastic wedge and a hammer.

-Place a gauge on the frame so that it is flush with the road and at the same slope.

-Do not use any (metal or wooden) bracket or threaded shaft when adjusting the height of the frame. This will cause leakage.



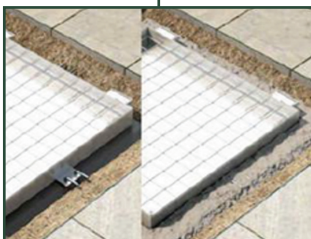
### 5- Stabilisation

5

-After adjusting the frame level, fasten it with anchors at the skirts.

-Fill the frame side gaps with fresh concrete.

-For a smooth and solid concrete, vibrate the fresh concrete with vibration to fill the gaps on the side and ensure that the frame holds the ground better.



### 6- Surface Correction

6

-Leave a height allowance equal to the thickness of the stone on the concrete for laying the stone coating.

-Use a trowel to level the fresh concrete.

-After the concrete hardens, you can proceed to the coating process.





A15



B125



C250



D400

MERT DÖKÜM®

MERT STEEL®

## APPLICATION STAGES

### 7- Level Adjustment

7

-In order to place stone veneer on the cover of your product, add fresh concrete / adhesive material to the cover. Use a trowel to level the fresh concrete.

-Check the height of your product to the frame when placing the parts of the stone cladding. The correct height difference between your product and the frame should not exist.

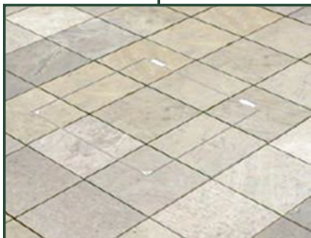


### 8- Fixing

8

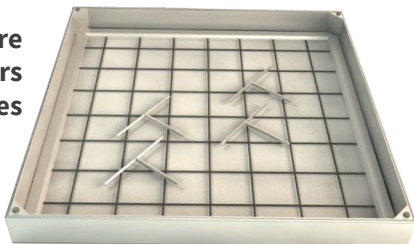
-For products using bolts as locking mechanism, make sure that the slots of the lock bolts are clean and the bolts are tightened appropriately.

-Before use, always check the underside of the frame and in particular whether the gasket touches the concrete. The correct installation method is when the gasket does not touch the concrete.



-The points to be checked after completing your product installation are as follows; Cover top gaps, hinges, EPDM gasket and moving mechanism areas. After your installation is completed, make sure that these points are clean and suitable for the installation stages.

**\* Screw holders are used to remove the covers from their places**

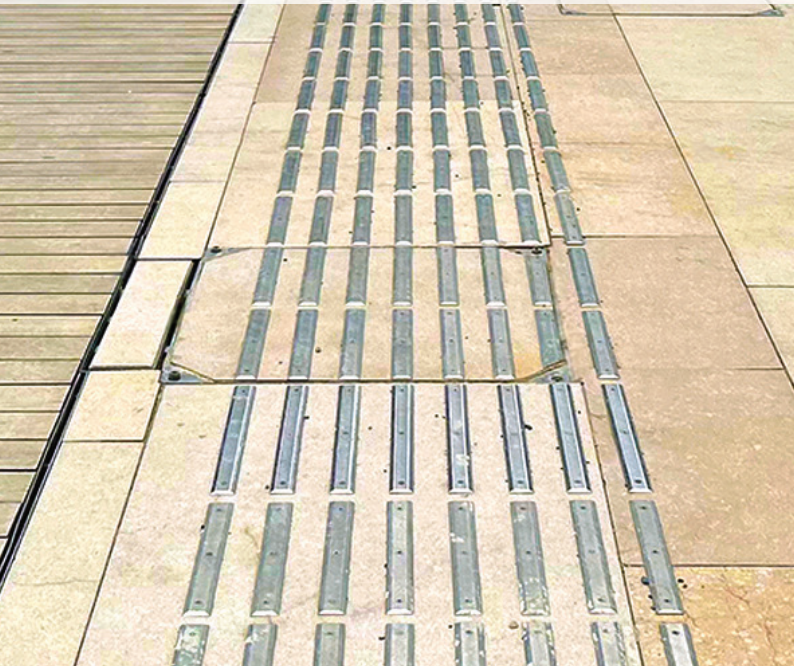


[www.mertdokum.com](http://www.mertdokum.com)



**MERT DÖKÜM®**

**MERT STEEL®**





**MERT DÖKÜM®**

**HEAD OFFICE:**

İMES Sanayi, 203. Sk. No:13  
D:Sitesi,B Blok, 34776  
Ümraniye/İstanbul, Türkiye

**MERT STEEL®**

**PHONE NUMBER :**

+(90) 216 313 4308

**EMAIL:**

export@mertdokum.com.tr

**[www.mertdokum.com](http://www.mertdokum.com)**